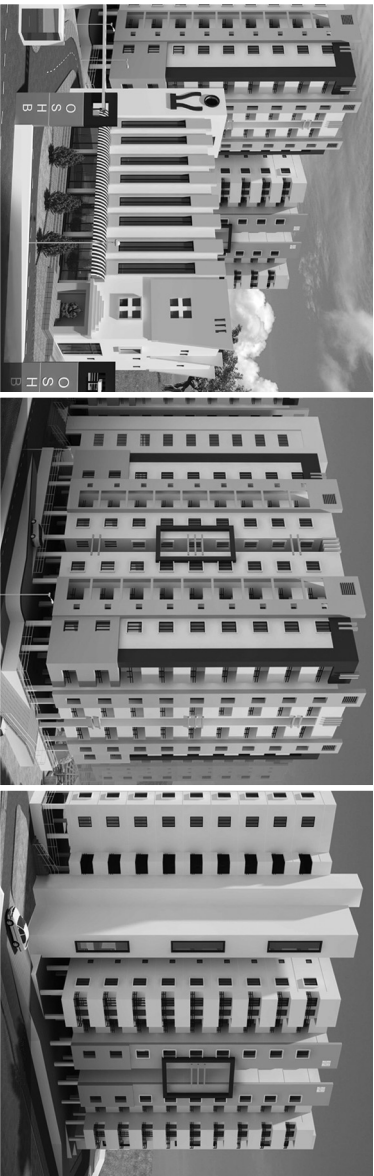


ODISHA STATE HOUSING BOARD

Presents Multistoried Residential Apartment Complex at Dumduma, Bhubaneswar

OSHB, the premier Housing Organisation of the State offers exclusive HIG Multi-storied Residential Apartment complex, consisting of 126 number of HIG (3 BHK flats) in TWO Blocks of Basement+Stilt+Nine storied structure, at DUMDUMA, BHUBANESWAR in its Phase-VI project over an area of Ac.2.137 dec. of Govt. land under self financing basis.

DUMDUMA PHASE-VI For HIG Category



Category of Flats	No. of Units	Built up Area/Plinth Area (Sft.) / Unit	Super Built-up Area (Sft.) / Unit	Provisional Sale Price (Rs.) / Unit	E.M.D. / Unit (Rs.)
HIG	126	1402 to 1437	1815 to 1866	61,85,000 to 63,60,000	6,50,000

Features of Phase-VI :

- 3 BHK Flat with additional room for servant/domestic help.
- Complex secured with compound wall, entrance gate and security cabin.
- 70% open space for free ventilation and lighting.
- **Each flat is open in three sides without any common wall between individual flats.**
- Ample covered parking space in Basement floor and Stilt floor.
- Cost of covered car Parking will be charged extra.
- Intercom connectivity from security cabin with individual flats.
- Exclusive Transformer, D.G. set.
- **Central Lawn and Children's Play Area.**
- **G+2 floor structure Community Centre** inside the complex for multi utility purpose and convenient shopping.
- Rain water harvesting.
- Mechanised Sewerage Treatment Plant.
- Fire fighting system.
- Lift.
- The flats are of three different sizes available with little variation in Built up and Super Built up area for each type.

OSHB, the premier Housing Organisation of the State offers Multi-storied Residential Apartment complex, consisting of 518 number of dwelling units (162 nos. of EWS flats in G/S+4 structure, 160 nos. of LIG flats in S+8 structure, 196 nos. MIG flats in B+G/S+8 structure i.e. a total of 518 nos. of dwelling units) at DUMDUMA, BHUBANESWAR in its Phase-VII project over an area of Ac.3.851 dec. of Govt. land under self financing basis.

DUMDUMA PHASE-VII For MIG, LIG, EWS Category



Category of Flats	No. of Units	Built up Area/Plinth Area (Sft.) / Unit	Super Built-up Area (Sft.) / Unit	Provisional Sale Price (Rs.) / Unit	E.M.D. / Unit (Rs.)
EWS	162	273	349	7,43,000	75,000
LIG	160	519	662	15,86,000	1,60,000
MIG	196	870	1033	33,14,000	3,50,000

Features of Phase-VII :

- Complex secured with compound wall, entrance gate and security cabin.
- Adequate open space for free ventilation and lighting.
- **LIG & MIG flats are open in three sides without any common wall between individual flats.**
- Covered parking space for two wheelers in Stilt floor for EWS & LIG.
- Covered car parking space in Basement floor and Stilt floor for MIG category.
- Exclusive Transformer, D.G. set for LIG, MIG category.
- **Central Lawn.**
- **Community space** for all categories.
- Mechanised Sewerage Treatment Plant.
- Fire fighting system.
- Cost of covered car Parking will be charged extra for MIG.
- Lift for LIG & MIG.

(I) The flats will be sold in finished shape along with necessary amenities and infrastructure. (II) E.M.D. is to be paid along with application and will be adjusted against sale price. (III) After selection, allottees will have to pay balance cost, as would be intimated by OSHB. (IV) Service Tax, Sales Tax, Cess and other statutory charges as applicable from time to time will be charged extra, in addition to sale price. (V) The intending applicants are requested to purchase the brochure along with the prescribed application forms on payment of Rs.1000/- in cash (non refundable) for HIG Category (Phase-VI) and Rs.700/- in cash (non refundable) for MIG, LIG & EWS Category (Phase-VII) from OSHB Head Office, Sachivalaya Marg, Bhubaneswar during working hours. (VI) Applicants interested to obtain the brochure through Post may send the request to Chief Accounts Officer before 15.12.2015 along with a Demand Draft of Rs.1150/- for HIG Category (Phase-VI) and Rs.850/- for MIG, LIG & EWS Category (Phase-VII) favouring "Orissa Housing Board Fund", payable at Bhubaneswar. (VII) The brochure and application form can also be downloaded from the Website of OSHB www.oshb.org and the cost of the brochure can be paid along with E.M.D. and other dues separately. (VIII) There is also provision for submission of online application through the official Website www.oshb.org.

- **Easy Payment schedule for allottees during construction period.**
- **Arrangement with VIJAYA BANK, OGNB BRANCH (OSHB Head Office Premises), for financing E.M.D. (Earnest Money Deposit) to eligible applicants at the discretion of bank.**
- **25 % of the Units reserved for outright purchasers and in such case 5% discount in sale Price.**

Booking Period :
01.12.2015 to 31.12.2015



ODISHA STATE HOUSING BOARD
Sachivalaya Marg, Kharavela Nagar, Bhubaneswar-751 001
Phone : (0674) 2393524, 2392587, Fax : (0674) 2393952
Phone : EPBAX : (0674) 2391542, 2390141 - Extn. 134 / 160 / 166 / 155

Housing Commissioner-cum-Secretary
Odisha State Housing Board

Visit us at : www.oshb.org